

Sky is the limit



WWW.GRSSCAFFOLDING.COM

## ADDRESS

### Factory :

Unit - 1 : 65/12, Ashu Bose Lane, Howrah - 711101  
Unit - 2 : 65/2, Ashu Bose Lane, Howrah - 711101  
Unit - 3 : Lakhanpur Industrial Area, Tetul Kuli,  
Domjur, Howrah.

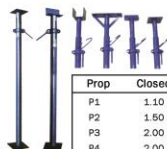
### Office :

Raipur : 8240557897  
Kolkata : 9830079087

www.grssc scaffolding.com / grssc scaffolding@gmail.com



## ADJUST STEEL PROPS



Steel tubes are used for inner and outer of Props. Adjustment vs safe axial load given below for Standard type props.

Outer : 60.30 mm O.D. Inner : 48.30 mm O.D.

Prop	Closed	Extended	Closed	Extended
P1	1.10	1.75	3500	3000
P2	1.50	2.75	3200	2300
P3	2.00	3.25	3000	2200
P4	2.00	3.75	2900	2000
P5	3.00	4.65	2300	1150
P-Junior	2.00	3.10	1500	1000

### Note:

Props must be braced in both directions by tubes and Double Couplers at approximately 250 mm above Prop Nut when extended beyond 3.75 M. Props with top U plate and also for Racking supports to wall from work available.

## ADJUSTABLE COLUMN CLAMPS



Adjustable column clamps are manufactured in three sizes to accommodate column sizes from 250 mm to 1370 mm and are ideally suited for use with either timber or steel forms, each is supplied complete with four arms with wedge and chain fittings.

Size No.	Column Size		Length of arm (mm)	Width of arm (mm)
	Min (mm)	Max (mm)		
1	200	700	1015	65
2	250	1075	1390	65
3	500	1370	1655	65

## FLOOR FORMS / SLAB SHUTTERING



Fabricated

Pressed

## LIGHT WEIGHT TELESCOPIC SPANS

### LOADING TABLE

Slab thickness mm	Total Load including 180kg/sq.m. for shuttering & Live load	Permissible Clear spans for centre line spacing			
		600 mm	800 mm	900 mm	1150 mm
125	480	5330	4650	4340	3760
150	540	5000	4350	4090	3560
200	660	4620	3950	3680	2840
250	780	4140	3650	3380	2840
300	900	3730	3400	3150	2400

Load tables for various slab thickness and spans. Overall lengths of span = clear span + 13 cm

## Cuplock Scaffolding System

Cuplock / Cup lock is a unique node point connection allows up to four horizontal members to be connected to a vertical members in one single action - without the use of nuts and bolts or wedges. The locking device is formed by two cups. Single node point action of unique locking make 'cuplock/Cuplock' a fast, versatile and optimized system of scaffolding for scaffolding for construction, demolition and maintenance projects throughout the world.



## Wedgelock Scaffolding System

Wedgelock is also known as kwikstage, it is a modular system scaffold with wedge fixing all access scaffold requirements. The wedge fixing of the ledgers and transoms gives a simple and fast means of erecting access scaffolding without loose parts, its rigid 4 way fixing giving a positive location without movement, spigot and wedge fitting on the standard to give guaranteed vertical alignment.



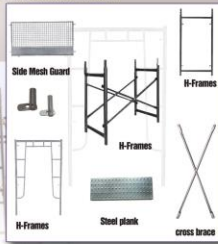
Standard / Vertical  
Ledger / Horizontal  
Quickwedge Transom  
Ladder Access Transom  
Return Transom  
Scaffolding Diagonal Brace  
Stage Bracket 1/2/3 Board  
Tie Bar  
Toe Board Bracket  
End Toe Board Bracket



## Frame Scaffolding System

Our Scaffolds Frame systems has gained world wide acceptance. In addition to this, our reliable and fiducial products are widely used by our esteemed clients in domestic market. We offer principal products at reasonable prices.

A frame  
H Frame  
Ladder Frame  
Cross Braces  
Frames sets  
Frame Accessories



## Scaffolding Pipe & Fittings

Pressed Double Coupler  
Pressed Swivel Coupler  
Leight Weight Double Coupler  
Leight Weight Swivel Coupler  
Drop Forged Double Coupler  
Drop Forged Swivel Coupler  
Drop Forged Putlog Coupler  
Sleeve Coupler  
Putlog Coupler  
Girder Coupler  
Stair Case Coupler  
Fencing Coupler  
Toe Board Coupler



## A.P.S. Scaffolding System

Consists of two verticals and one horizontal, both of 48.3 mm OD tube. On verticals, Lugs welded at 500 mm centres provide rigid support to horizontal, which has built-in three way clamps welded at both ends to take bracing tube connecting the units.

Standard Sizes :  
2000 x 1220 mm  
1500 x 1220 mm  
1000 x 1220 mm  
2000 x 1830 mm  
500 x 1830 mm  
1000 x 1830 mm.



## Cribs Staggering



## Staircase Scaffolding Tower



## Wall Formwork System and Accessories



## Ringlock Scaffolding System



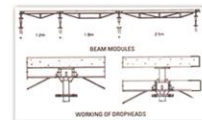
## Metform Scaffolding System

Rbariya Metform is the leading formwork system for the construction of concrete floors and walls. Minimal assembly and dismantling time coupled with a limited number of components highlight today's most cost-effective system.

Arbariya Metform incorporates the advantages of early striking (enabling early removal of formwork beams and panels while R.C.C. slab remains supported on props with drop-heads) which will dramatically increase output, whilst employing less labour more efficiently.

Metform system can be used with Arbariya Props for concreting of slabs at ordinary heights, or with Arbariya CUPLOCK scaffolding for greater heights.

Standard Metform Beams are available in 2.5, 1.8 and 1.2 m sizes making this system suitable for different grids. Use of special 1.8m beams for support of beam soffit can allow early removal of even beam bottom formwork. 70 mm deep Metform Universal Panels and Adjuster Panels are manufactured out of 2 mm (14g) sheets with pressed flanges and stiffener.



Arbariya Metform is also made available in a range of specially designed Metform Beams & Dropheads, which is compatible for use with conventional 38 mm deep Floor/Slab Form. The most important part of shuttering is the drophead. Dropheads allow the beams, infills and panels to be lowered at a hammer's stroke. The wedge is specially constructed to endure repeated strokes of the hammer.

## Aluminium Formwork Accessories

